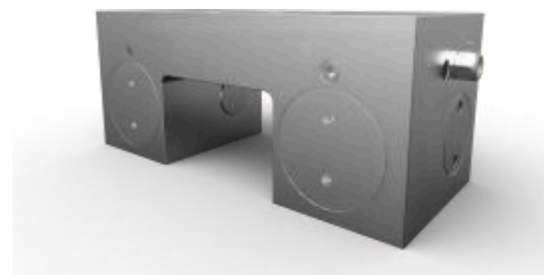


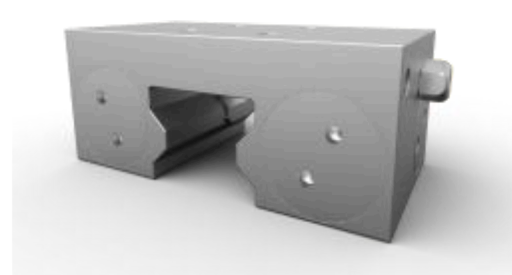
# CLAMPING ELEMENTS

## CLAMPING ELEMENTS/PNEUMATIC

### Energine To Open (NO)



NO-B Ball Type



NO-R Roll Type

#### Model

**NO 25 B - H C - L**

- ① ② ③ ④ ⑤ ⑥

- ① NO: Energine to open
- ② Linear guide size: 15-65
- ③ B: Ball type linear guide  
R: Roller type linear guide
- ④ H: Spacer plate  
None: Standard
- ⑤ C: Copper free  
Z: Zinc free N: Nickel free
- ⑥ Air pipe joint and silencer position:  
L: Left R: Right

## CLAMPING ELEMENTS/PNEUMATIC

### NO-B Ball Type Parameters

Model	Holding torque(N)	Air Cons(cycle(ANR))
NK25B	900	0.021
NO15B	650	0.011
NO20B	1000	0.019
NO25B	1200	0.021
NO30B	1750	0.03
NO35B	2000	0.03
NO45B	2250	0.04
NO55B	2250	0.04
NO65B	3000	0.07
NO12	650	0.02

### NO-R Roller Type Parameters

Model	Holding torque(N)	Air Cons(cycle(ANR))
NO25R	1200	0.021
NO30R	1750	0.03
NO35R	2000	0.03
NO45R	2250	0.04
NO55R	2250	0.04
NO65R	3000	0.07

Note: The data in the table are values at 0.6MPa air pressure. The holding force is proportional to the air pressure within the working pressure range.

### Working parameters

Working pressure	0.2~0.6MPa
Response time	≤0.06 seconds
Use temperature	0°C~70°C
Clamp life	5 million times

### CLAMPING ELEMENTS/PNEUMATIC

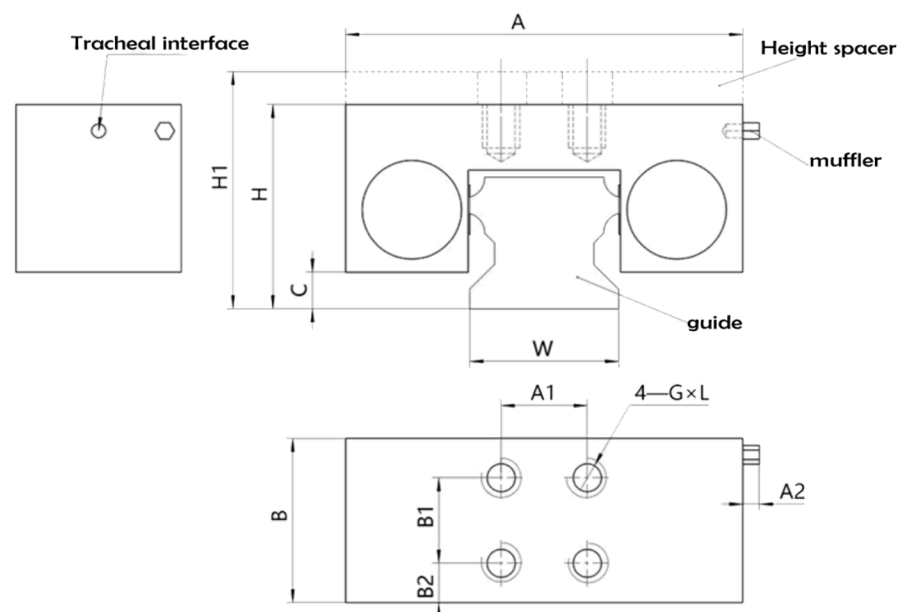
## NO-B Ball Type Dimensions

Unit: mm

Model	W	A	A1	A2	B	B1	B2	H	H1	C	G	L
NO15B	15	55	15	5	39	15	15.5	24	28	2.5	M4	4.5
NO20B	20	66	20	5	38	20	8.5	30	--	4	M5	6
NO25B	23	75	20	5	38	20	10	36	40	5.5	M6	8
NO25B	23	75	20	5	35	20	5	36	40	8	M6	8
NO30B	28	90	22	5	42	22	8.5	42	45	7	M8	8
NO35B	34	100	24	5	42	24	9	48	55	7	M8	10
NO45B	45	120	26	5	50	26	12	60	70	9	M10	15
NO55B	53	136	30	5	50	30	10	70	80	14	M10	16
NO65B	63	146	30	5	50	30	10	90	--	22	M10	16

H1 is the combined height after installing the spacer plate.

### Dimensions



### CLAMPING ELEMENTS/PNEUMATIC

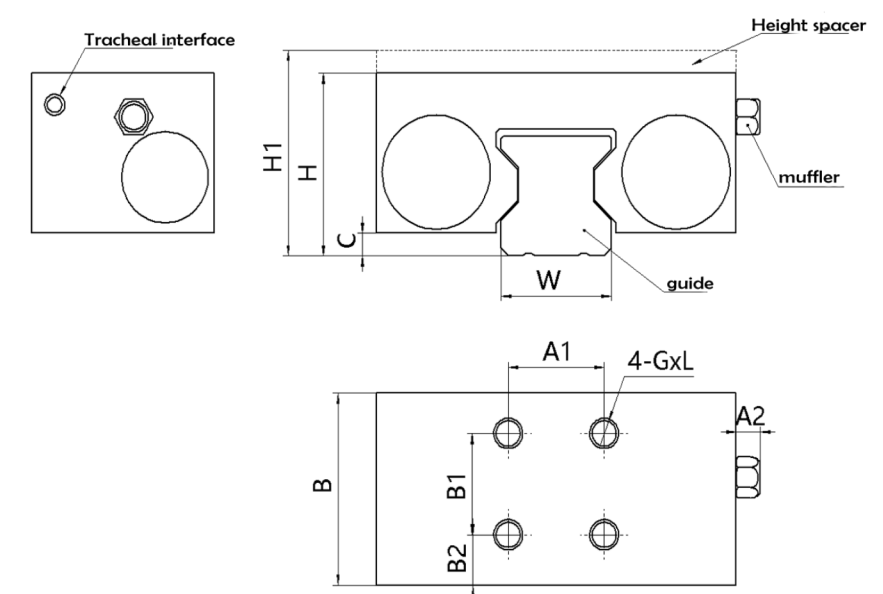
## NO-R Roll Type Dimensions

Unit: mm

Model	W	A	A1	A2	B	B1	B2	H	H1	C	G	L
NO25R	23	75	20	5	38	20	10	36	40	4.5	M6	7
NO25R-H	23	75	20	5	38	20	10	40	--	4.5	M6	8
NO30R	28	90	22	5	41	22	9.5	42	45	5	M8	9
NO30R-H	28	90	22	5	41	22	9.5	45	--	--	M8	9
NO35R	34	90	24	5	41	24	8.5	48	55	5	M8	10
NO35R-H	34	100	24	5	41	24	8.5	55	--	5	M8	10
NO45R	45	100	26	5	50	26	12	60	70	8.5	M10	15
NO55R	53	128	30	5	50	30	10	70	80	10	M10	17
NO65R	63	138	30	5	50	30	10	90	--	13	M10	19

H1 is the combined height after installing the spacer plate.

### Dimensions



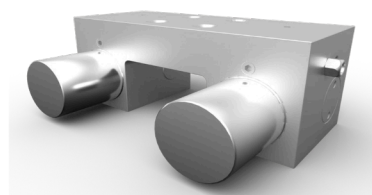
## CLAMPING ELEMENTS/PNEUMATIC

# Energine To Close (NC/MKS)

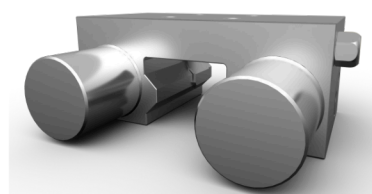
### Model

**NC 25 B 04 - H C - L**  
 ① ② ③ ④ ⑤ ⑥ ⑦

- ① NC:Energine to close
- ② Linear guide size: 15-65
- ③ B:Ball type linear guide  
R:Roller type linear guide
- ④ 03:03MPa.04:04MPa, None <math>\angle 0.55\text{MPa}</math>
- ⑤ H:Spacer plate None: Standard  
C:Copper free.Z:Zinc free.N:Nickel free
- ⑥ Air pipe joint and silence position:
- ⑦ L:Left  
R:Right



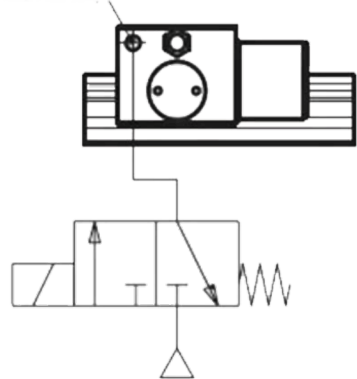
(MKS)NC-B Ball Type



NC-R Roll Type

### Connection method

Air pressure connection method

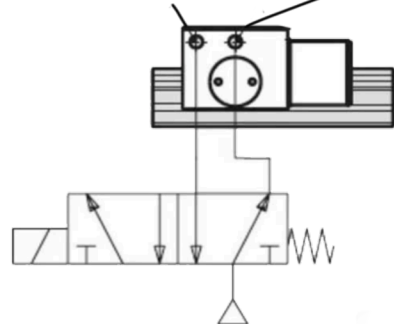


During normal use

#### Notes for boost connection

- 1.Remove the muffler.
- 2.Connect pipe joints, air pipes, and solenoid valves.
- 3.Supply air and start the solenoid valve, check and confirm the clamping and opening status of the brake.

Piping for booster connection  
Air pressure connection method



When using a boost connection

## CLAMPING ELEMENTS/PNEUMATIC

### Standard rated holding force

#### NC-B Ball Type

Model	Holding torque(N)	Air Cons(cycle(ANR))
NKS25B	600/1300	0.021/0.07
NC15B	400/1050	0.011/0.035
NC20B	600/1300	0.019/0.064
NC25B	750/1400	0.021/0.07
NC30B	1050/2600	0.03/0.12
NC35B	1250/3250	0.03/0.13
NC45B	1450/3300	0.07/0.3
NC55B	1450/3300	0.07/0.3
NC65B	1450/3300	0.07/0.3
NC12	350/-	0.02/-

#### NC-R Roller Type

Model	Holding torque(N)	Air Cons(cycle(ANR))
NC25R	750/1400	0.021/0.07
NC30R	1050/2600	0.03/0.12
NC35R	1250/3250	0.03/0.13
NC45R	1450/3300	0.07/0.3
NC55R	1450/3300	0.07/0.3
NC65R	1450/3300	0.07/0.3

Note: The boost connection data is the value at 0.6MPa air pressure.

#### Working parameters

Model	NC	NC-04	NC-03
Open air pressure	0.55MPa	0.4MPa	0.3MPa
Maximum working pressure	0.6MPa		
Response ti	≤0.06 seconds		
Operating temperature	0°C~70°C		
Clamping life	5 million times		

## CLAMPING ELEMENTS/PNEUMATIC

### 0.3MPa low pressure type rated holding force

#### NC-B Ball Type

Model	Holding torque(N)	Air Cons(cycle(ANR))
NC15B-03	250/550	0.011/0.035
NC20B-03	350/810	0.015/0.05
NC25B-03	350/880	0.016/0.05
NC30B-03	750/1320	0.03/0.09
NC35B-03	850/1800	0.03/0.1
NC45B-03	1100/1900	0.07/0.2
NC55B-03	1100/1900	0.07/0.2
NC65B-03	1100/1900	0.07/0.2
NC12-03	180/-	0.02/-

#### NC-R RollerType

Model	Holding torque(N)	Air Cons(cycle(ANR))
NC25R-3	350/880	0.016/0.05
NC30R-3	750/1320	0.03/0.09
NC35R-3	850/1800	0.03/0.1
NC45R-3	1100/1900	0.07/0.2
NC55R-3	1100/1900	0.07/0.2
NC65R-3	1100/1900	0.07/0.2

Note: The boost connection data is the value at 0.3MPa air pressure.

## CLAMPING ELEMENTS/PNEUMATIC

### 0.4MPa low pressure type rated holding force

#### NC-B Ball Type

Model	Holding torque(N)	Air Cons(cycle(ANR))
NKS15B-04	550/1100	0.016/0.05
NC15B-04	300/650	0.011/0.035
NC20B-04	500/1200	0.015/0.05
NC25B-04	650/1300	0.016/0.05
NC30B-04	850/1700	0.03/0.09
NC35B-04	850/1800	0.03/0.1
NC45B-04	1350/2000	0.07/0.2
NC55B-04	1350/1200	0.07/0.2
NC65B-04	1350/2000	0.07/0.2
NC12-04	300/-	0.02/-

#### NC-R Roller Type

Model	Holding torque(N)	Air Cons(cycle(ANR))
NC25R-4	350/880	0.016/0.05
NC30R-4	750/1320	0.03/0.09
NC35R-4	850/1800	0.03/0.1
NC45R-4	1100/1900	0.07/0.2
NC55R-4	1100/1900	0.07/0.2
NC65R-4	1100/1900	0.07/0.2

Note: The boost connection data is the value at 0.4MPa air pressure.

### CLAMPING ELEMENTS/PNEUMATIC

### CLAMPING ELEMENTS/PNEUMATIC

## MKS-B Ball Type Dimensions

## NC-R Roll Type Dimensions

Unit: mm

Unit: mm

Model	W	A	A1	A2	B	B1	B2	H	H1	C	G	L
MKS15B	15	55	15	5	60	15	15.5	24	28	2.5	M4	4.5
MKS20B	20	66	20	5	59	20	8.5	30	--	4	M5	6
MKS25B	23	75	20	5	59	20	10	36	40	5.5	M6	8
MKS25B	23	75	20	5	56	20	5	36	40	8	M6	8
MKS30B	28	90	22	5	70	22	8.5	42	45	7	M8	8
MKS35B	34	100	24	5	70	24	9	48	55	7	M8	10
MKS45B	45	120	26	5	82	26	12	60	70	9	M10	15
MKS55B	53	136	30	5	82	30	10	70	80	14	M10	16
MKS65B	63	146	30	5	82	30	10	90	--	22	M10	16

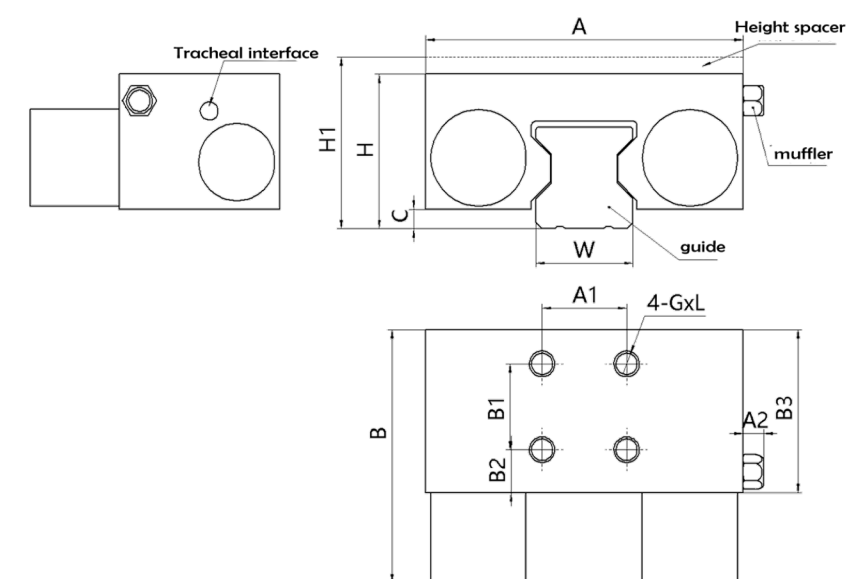
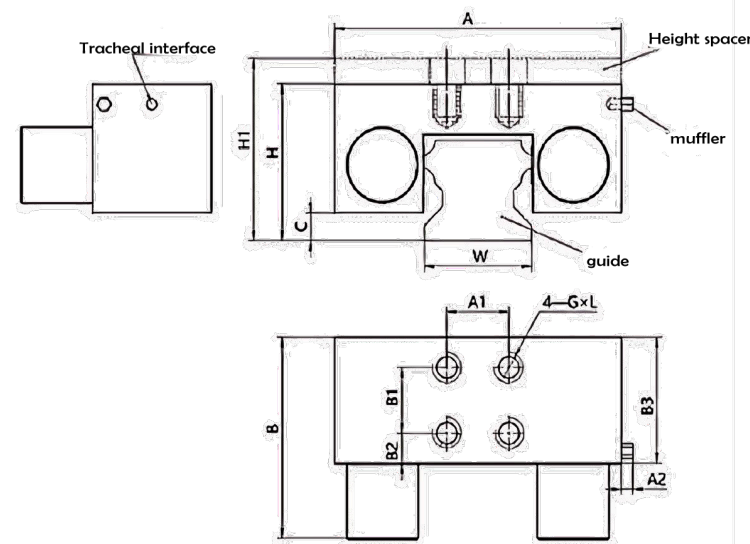
Model	W	A	A1	A2	B	B1	B2	H	H1	C	G	L
NC25R	23	75	20	5	59	20	10	36	40	4.5	M6	7
NC25R-H	23	75	20	5	59	20	10	40	--	4.5	M6	8
NC30R	28	90	22	5	68.5	22	9.5	42	45	5	M8	9
NC30R-H	28	90	22	5	68.5	22	9.5	45-	5	M8	9	
NC35R	34	90	24	5	68.5	24	8.5	48	55	5	M8	10
NC35R-H	34	100	24	5	68.5	24	8.5	55	--	5	M8	10
NC45R	45	100	26	5	82	26	12	60	70	8.5	M10	15
NC55R	53	128	30	5	82	30	10	70	--	10	M10	17
NC65R	63	138	30	5	82	30	10	90	80	13	M10	19

H1 is the combined height after installing the spacer plate.

H1 is the combined height after installing the spacer plate.

### Dimensions

### Dimensions





## CLAMPING ELEMENTS/MANUAL

### Manual Clamping (HK)

#### Model

**HK 25 01- H**

① ② ③ ④

- ① HK:Manual clamping
- ② Linear guide size: 15-45
- ③ Product serial number
- ④ H:Spacer plate  
None: Standard model

#### Spacer plate size

Model	t(mm)
H-15-4	4
H-25-4	4
H-30-4	3
H-35-7	7

Model	Holding Torque (N)	Weight(KG)
HK1501A	500	0.13
HK2001A	750	0.25
HK2501A	850	0.35
HK3001A	1300	0.8
HK3501A	2000	1.2

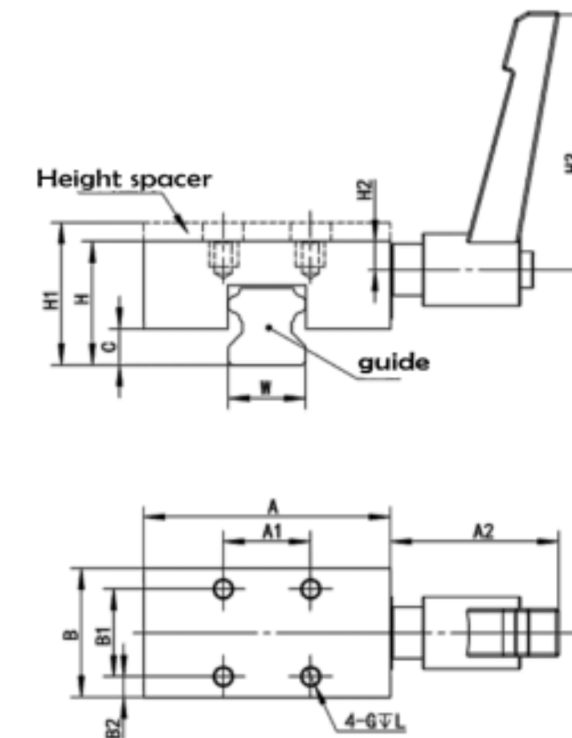
## CLAMPING ELEMENTS/MANUAL

### Manual Clamping (HK)

Unit: mm

Model	W	A	A1	A2	B	B1	B2	H	H1	H2	H3	C	G	L
HK1501A	15	47	17	33	25	17	4	24	28	4.8	50	7	M4	5
HK2001A	20	60	20	33	28	20	4	30	--	6.7	50	10	M5	6
HK2002A	20	60	15	33	24	15	4.5	30	--	6.7	50	10	M6	6
HK2501A	23	70	20	33	30	20	5	36	40	9.8	50	10	M6	7
HK3001A	28	90	20	44	34	20	7	42	45	9.2	63	12	M8	8
HK3501A	34	100	24	44	38	24	7	48	55	11	63	16	M8	10
HK4501A	45	120	26	44	44	26	9	60	70	13	63	18	M10	14

#### Dimensions



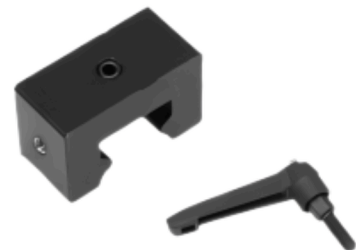
## LINEAR GUIDE RAIL ENDSTOPS

### Endstops

#### Type



Normal Type



Side Fix Type



Cushion Type



Cushion and Side Fix Type

#### Model

##### **HG 15 - N**

① ② ③

- ① HG: HGR series linear guides  
EG:EGR series linear guides
- ② Linear guide size: 15-55
- ③ N:Normal type  
S:Side fix type  
C:Cushion type  
CS:Cushion and side fix type

## LINEAR GUIDE RAIL ENDSTOPS

#### HG series endstop dimensions

Unit: mm

Model	Length	Width	Height	Thickness	jack screw size
HG15	20	30	20	7	M6
HG20	20	40	25	10	M6
HG25	20	45	30	12	M6
HG30	20	50	30	7	M6
HG35	20	60	35	10	M6
HG45	25	70	45	11	M6
HG55	25	80	55	15	M8 double jack screw

#### EG series endstop dimensions

Unit: mm

Model	Length	Width	Height	Thickness	jack screw size
EG15	20	30	15	5	M6
EG20	20	35	20	7	M6
EG25	20	45	25	10	M6
EG30	20	50	28	10	M6



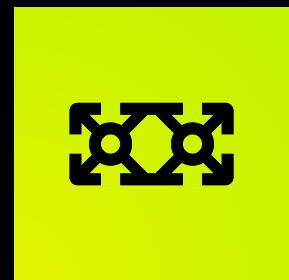
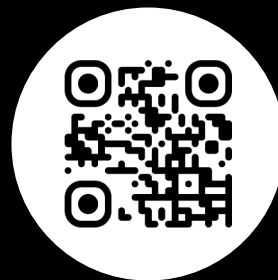
- We deliver **components & solutions.**

**L-SYSTEM AB** (*Head office*)

Mörsaregatan 20  
254 66 Helsingborg  
SWEDEN  
info@l-system.se  
+46 (0)42 38 61 50

**L-SYSTEM ApS**

Roms Hule 8 (Østtårne)  
7100 Vejle  
DENMARK  
info@l-system.dk  
+45 32 26 80 81



**L-SYSTEM**